

# \$524,900 - 132 Ranchman Place Ne, Medicine Hat

MLS® #A2251313

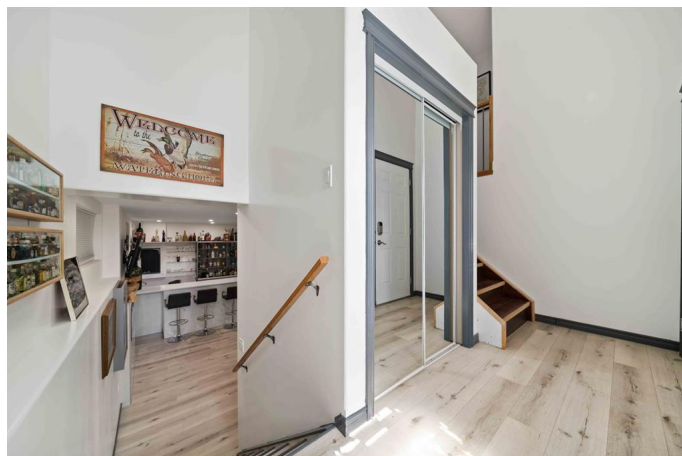
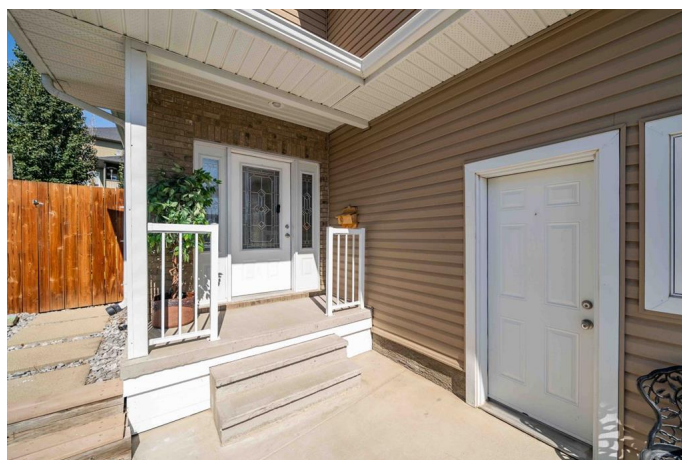
**\$524,900**

4 Bedroom, 3.00 Bathroom, 1,494 sqft

Residential on 0.11 Acres

Ranchland, Medicine Hat, Alberta

The home you need. The yard you crave. The neighbourhood you've been waiting for. Welcome to 132 Ranchman Place NE. This gorgeous 1494 sq ft modified bi-level is tucked away into the back corner of a quiet court in one of Medicine Hat's most sought-after neighbourhoods. With a total of 4 bedrooms + an office, this home has all the space your family needs, and all the upgrades you were hoping for. The main floor features an updated kitchen with classic white quartz countertops, centre island, spacious pantry, and a generous dining area. This space is open to a large livingroom with corner gas fireplace and large windows that look out to the backyard. The main floor also offers a sizeable office with french doors, a handy laundry room and 5pc bathroom. Head upstairs to one of the most incredible primary bedrooms you can imagine. This massive private suite features all the space you need for a sitting area or workout equipment. This bedroom also features a beautiful ensuite bathroom with a gorgeous custom shower, heated floors, relaxing soaker tub, and dual vanities, as well as a spacious walk-in closet. The basement was thoughtfully designed and finished offering a large rec room with custom wet bar, vinyl flooring, and an abundance of built-in shelving for all your family photos and collectibles. Relax in this space with family and friends, turn on the attractive electric fireplace, and enjoy the big game or family movie night! The basement also offers two



spacious bedrooms and an outstanding 4pc bathroom with heated tile floors and a custom makeup desk. The beautiful backyard is truly an oasis, offering the peaceful space that your soul will truly appreciate. The large covered deck features roll-up screens for shade and privacy. The lower patio area features a relaxing gazebo, cooking area with gas barbeque (included), and plenty of seating space to host the backyard parties you have always wanted. While there isn't a single blade of grass to mow, there are still underground sprinklers feeding the flowers and trees, and the small area beside the home offers artificial grass for a clean and natural look. The double attached garage will protect your vehicles from Mother Nature, and offer the workspace you need for your hobbies. New A/C unit approx 2 years ago. Alarm system included with no equipment charges, only \$41/month for monitoring. This home has everything you've been waiting for!

Built in 2008

**Essential Information**

MLS® #	A2251313
Price	\$524,900
Bedrooms	4
Bathrooms	3.00
Full Baths	3
Square Footage	1,494
Acres	0.11
Year Built	2008
Type	Residential
Sub-Type	Detached
Style	Bi-Level
Status	Active

**Community Information**

Address	132 Ranchman Place Ne
---------	-----------------------

Subdivision	Ranchland
City	Medicine Hat
County	Medicine Hat
Province	Alberta
Postal Code	T1C 0E3

### Amenities

Parking Spaces	4
Parking	Double Garage Attached
# of Garages	2

### Interior

Interior Features	Double Vanity, Kitchen Island, Pantry, Quartz Counters, Wet Bar
Appliances	Central Air Conditioner, Dishwasher, Electric Stove, Microwave Hood Fan, Refrigerator, Washer/Dryer, Window Coverings
Heating	Forced Air
Cooling	Central Air
Fireplace	Yes
# of Fireplaces	2
Fireplaces	Electric, Gas
Has Basement	Yes
Basement	Finished, Full

### Exterior

Exterior Features	Private Yard
Lot Description	Back Yard, Gazebo, Low Maintenance Landscape, Private, Treed
Roof	Asphalt Shingle
Construction	Wood Frame
Foundation	Poured Concrete

### Additional Information

Date Listed	August 26th, 2025
Zoning	R-LD

### Listing Details

Listing Office	ROYAL LEPAGE COMMUNITY REALTY
----------------	-------------------------------

Data is supplied by Pillar 9â„¢ MLS® System. Pillar 9â„¢ is the owner of the copyright in its MLS® System. Data is deemed reliable but is not guaranteed accurate by Pillar 9â„¢. The trademarks MLS®, Multiple Listing Service® and the associated logos are owned by The Canadian Real Estate Association (CREA) and identify the quality of services provided by real estate professionals who are members of CREA. Used under license.