

# \$309,900 - 403, 165 South Ridge Drive Se, Medicine Hat

MLS® #A2200024

**\$309,900**

3 Bedroom, 3.00 Bathroom, 1,480 sqft

Residential on 0.00 Acres

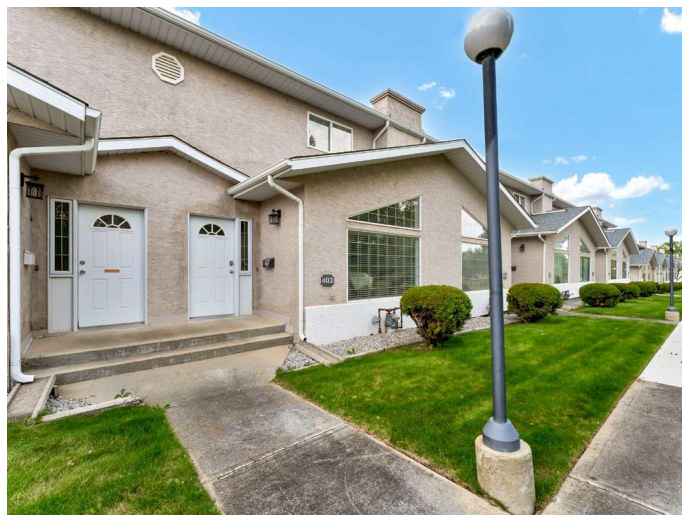
SE Southridge, Medicine Hat, Alberta

This beautiful Southridge home, perfectly positioned facing tranquil Sprague Park, offers a thoughtfully designed layout and numerous updates. The stunning kitchen features a walk-in pantry, large island, granite countertops, and stainless steel appliances, while the inviting living room boasts a bright window and cozy fireplace. Upstairs, youâ€™™ find spacious bedrooms, a Jack-and-Jill ensuite with a beautifully tiled shower, a skylight for added charm, and a primary suite with a walk-in closet. The fully developed lower level includes a family room, two versatile den/office spaces, and another full bathroom. Additional highlights include an insulated, finished attached garage with direct home access, an extra parking stall, main floor laundry, high-efficiency furnace, and a low-maintenance deck and patioâ€™™making this home a true gem in a fantastic, quiet location. Contact your local neighbourhood REALTORÂ® today!

Built in 1995

## Essential Information

MLS® #	A2200024
Price	\$309,900
Bedrooms	3
Bathrooms	3.00
Full Baths	2
Half Baths	1



Square Footage	1,480
Acres	0.00
Year Built	1995
Type	Residential
Sub-Type	Row/Townhouse
Style	2 Storey
Status	Active

### **Community Information**

Address	403, 165 South Ridge Drive Se
Subdivision	SE Southridge
City	Medicine Hat
County	Medicine Hat
Province	Alberta
Postal Code	T1B 4H6

### **Amenities**

Amenities	Parking, Snow Removal, Visitor Parking
Parking Spaces	2
Parking	Single Garage Attached
# of Garages	1

### **Interior**

Interior Features	Built-in Features, Granite Counters, Vinyl Windows
Appliances	Central Air Conditioner, Dishwasher, Garage Control(s), Microwave Hood Fan, Refrigerator, Stove(s), Washer/Dryer, Window Coverings
Heating	Forced Air
Cooling	Central Air
Fireplace	Yes
# of Fireplaces	1
Fireplaces	Gas, Mantle
Has Basement	Yes
Basement	Finished, Full

### **Exterior**

Exterior Features	Other, Private Entrance
Lot Description	Backs on to Park/Green Space
Roof	Asphalt Shingle
Construction	Mixed

Foundation                  Poured Concrete

### **Additional Information**

Date Listed                  September 3rd, 2025

Days on Market            2

Zoning                        R-MD

### **Listing Details**

Listing Office               RE/MAX MEDALTA REAL ESTATE

Data is supplied by Pillar 9â„¢ MLS® System. Pillar 9â„¢ is the owner of the copyright in its MLS® System. Data is deemed reliable but is not guaranteed accurate by Pillar 9â„¢. The trademarks MLS®, Multiple Listing Service® and the associated logos are owned by The Canadian Real Estate Association (CREA) and identify the quality of services provided by real estate professionals who are members of CREA. Used under license.